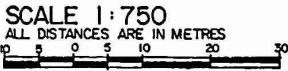


BARE LAND STRATA PLAN OF LOT 22 OF SEC. 19, TP. 3, RGE. 29 W. 6 M. PLAN 64737 - N.W.D

STRATA PLAN NW 1949

Deposited and Registered in the Land Title
Office at New Westminster, B.C. this 15th
day of October 1982.

The Corporation of the District of Kent

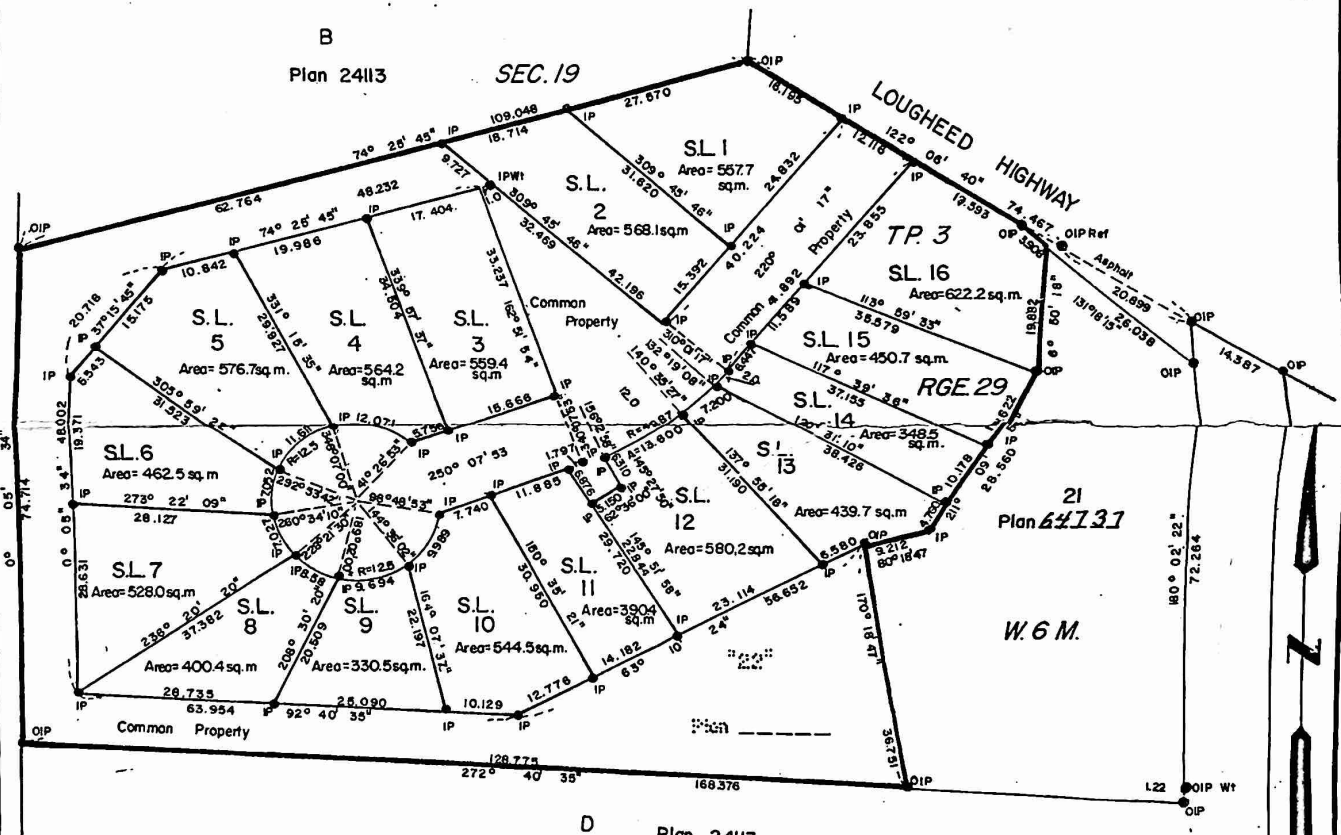


D. Seddes
Assistant - Deputy Registrar
Ref. U86199-F

Bearings are astronomic and
are derived from Plan 24113.

LEGEND

- IP - Iron post set
- Wt - indicates witness
- OIP - Old iron post found
- sq.m - indicates square metres
- S.L. - indicates Strata Lot
- Ref - indicates reference.



Approved as a Bare Land Strata under
the Condominium Act, this 26
day of AUGUST 1982.

NAME OF DEVELOPMENT
'Mount Woodside'

R. Smalish
Approving Officer
The Corporation of the District
of Kent

The address for the service of
documents on the Strata Corporation is
THE OWNERS - STRATA PLAN NW 1949

Approved as a Bare Land Strata
under the Condominium Act, this
26th day of July 1982

2216 Lougheed Highway
Municipality of Kent, B.C.

David M. Howard
Approving Officer
Ministry of Transportation
and Highways

Civic address as follows:
2216 Lougheed Highway
Municipality of Kent, B.C.

I, D.G. Fenning, a British Columbia Land
Surveyor, of Maple Ridge, in British Columbia
certify that I was present at and personally
superintended the survey represented by this
plan and that the survey and plan are correct.
The survey was completed on the 30th
day of March 1982.

J.M.C. Wade and Associates
B.C. Land Surveyors
Mission and Maple Ridge
File M - 2150

This plan lies in the Fraser -
Cheam Regional District.

D.G. Fenning
D.G. Fenning, B.C.L.S.O.