

PLAN OF SUBDIVISION OF
 PART OF S.W. 1/4 SEC. 5 & PART OF S.E. 1/4 SEC. 5
 TP. 84, RGE. 18 W. OF 6TH MERIDIAN
 PEACE RIVER DIST.

SCALE: 1 INCH = 100 FEET.

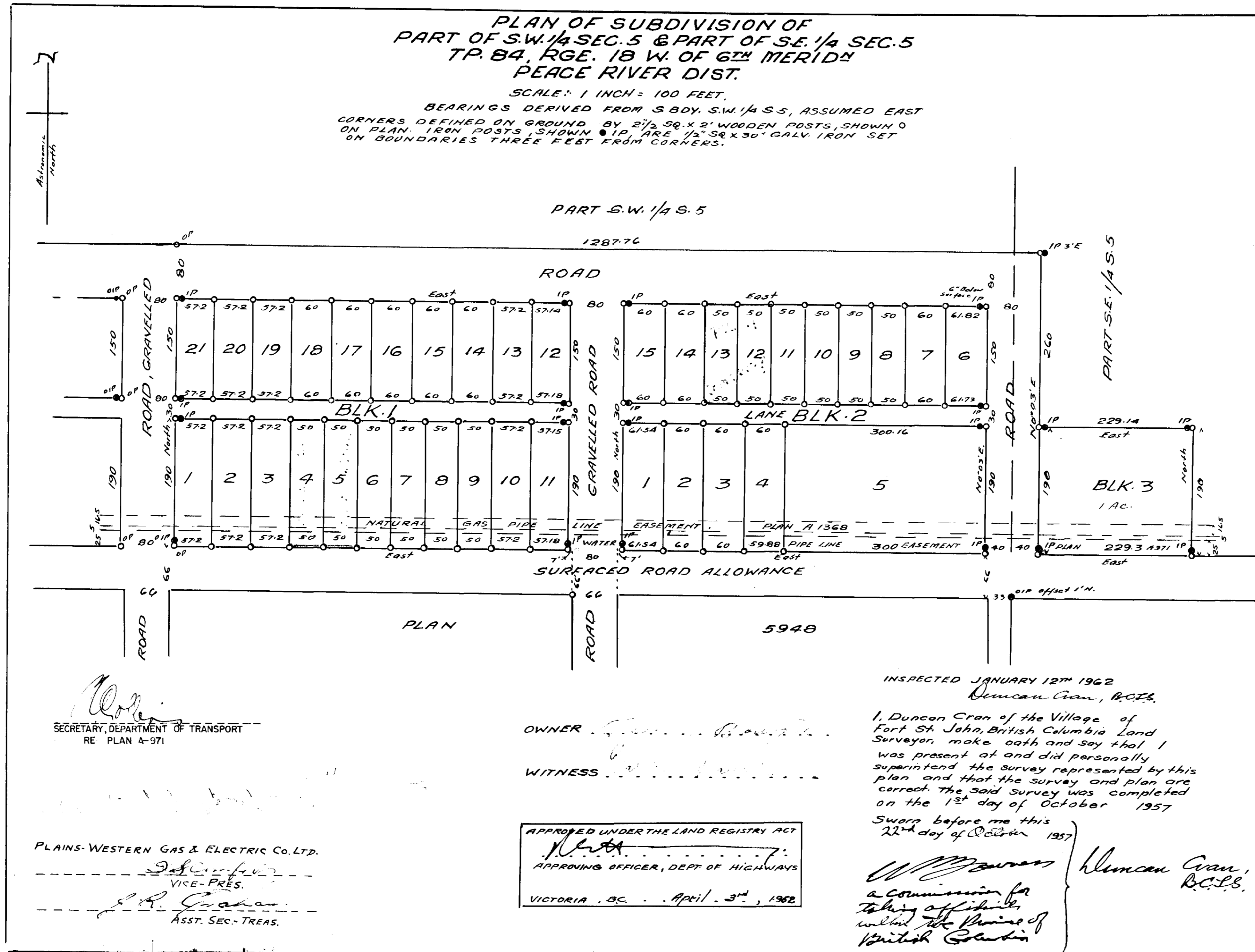
BEARINGS DERIVED FROM S 80° S.W. 1/4 S. 5, ASSUMED EAST
 CORNERS DEFINED ON GROUND BY 2 1/2" SQ. X 2' WOODEN POSTS, SHOWN O
 ON PLAN. IRON POSTS, SHOWN IP, ARE 1/2" SQ. X 30" GALV. IRON SET
 ON BOUNDARIES THREE FEET FROM CORNERS.

PLAN 12244

DEPOSITED IN THE LAND REGISTRY OFFICE AT KAMLOOPS, B.C.

THIS 1ST DAY OF MAY, 1962.

[Signature]
 REGISTRAR



[Signature]
 SECRETARY, DEPARTMENT OF TRANSPORT
 RE PLAN 4-971

OWNER *[Signature]*
 WITNESS *[Signature]*

APPROVED UNDER THE LAND REGISTRY ACT
[Signature]
 APPROVING OFFICER, DEPT OF HIGHWAYS
 VICTORIA, B.C. April 3rd, 1962

INSPECTED JANUARY 12TH 1962
 Duncan Cran, R.C.S.S.
 I, Duncan Cran of the Village of Fort St. John, British Columbia Land Surveyor, make oath and say that I was present at and did personally superintend the survey represented by this plan and that the survey and plan are correct. The said survey was completed on the 1st day of October 1957.
 Sworn before me this 22nd day of October 1957.
[Signature] Duncan Cran, R.C.S.S.
 a Commissioner for taking affidavits within the Province of British Columbia

PLAINS-WESTERN GAS & ELECTRIC Co. LTD.
[Signature]
 VICE-PRES.
[Signature]
 ASST. SEC. TREAS.